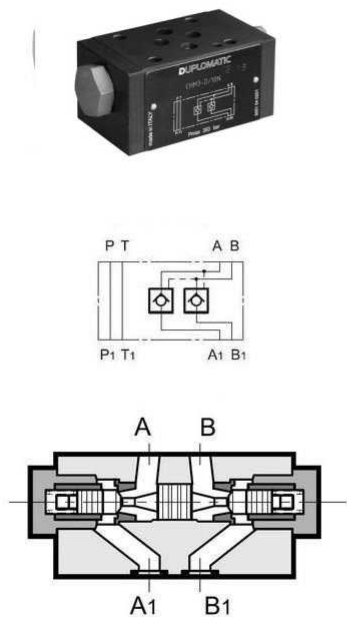
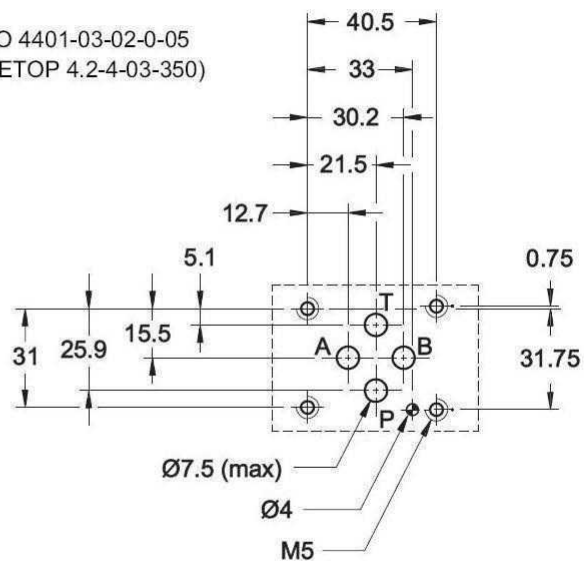


Pilot operated double check valve NG6



ISO 4401-03-02-0-05
(CETOP 4.2-4-03-350)



Check valve cracking pressure 3 bar
Max. flow rate in controlled lines 50 l/min

Part n°	PILOT RATIO	SIZE	MAX. PRESSURE (bar)
CHM3-D-10N	3,4 : 1	NG-6	350
CHM3-D-10N/W7	3,4 : 1	NG-6	350

W7 zinc plated