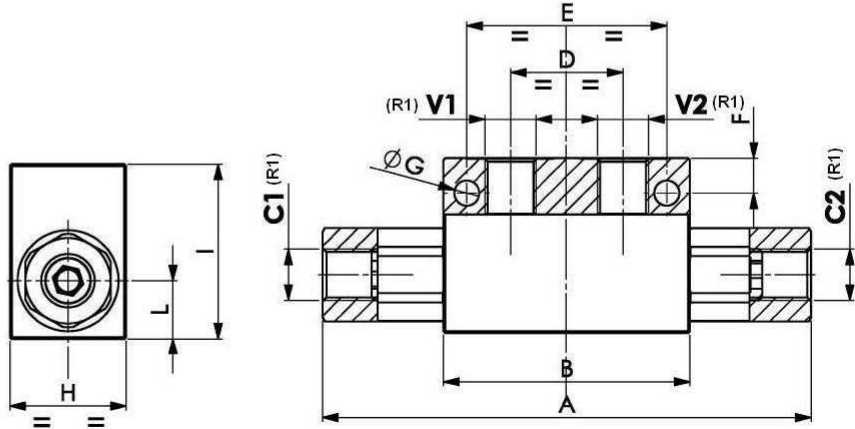
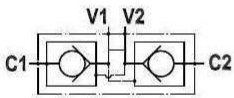
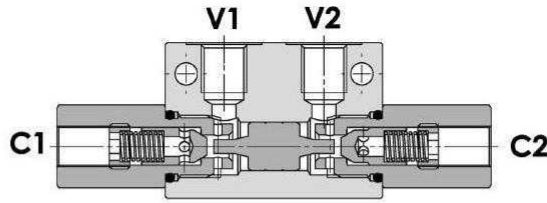


## Double pilot operated check valve in block (in T)



**Material** Body in Steel

**Cracking Pressure** 2 bar

Part n°	R1	Max. flow (l/min)	Max. Press. (bar)	Pilot ratio	L	ØG	A	B	D	E	F	H	I
VT008004	1/4" BSP	12	350	1 : 4	15	6,5	126	63,6	29	51,6	9	30	45
VT008006	3/8" BSP	30	300	1 : 6	20	8	158	90	40	75	17	40	60
VT00800620	3/8" BSP	20	300	1 : 4	15	*	126	63,6	29	*	*	30	45
VT008008	1/2" BSP	45	300	1 : 6	20	8	174	90	40	75	17	40	60

\* Valve VT00800620 is supplied without fixing holes